

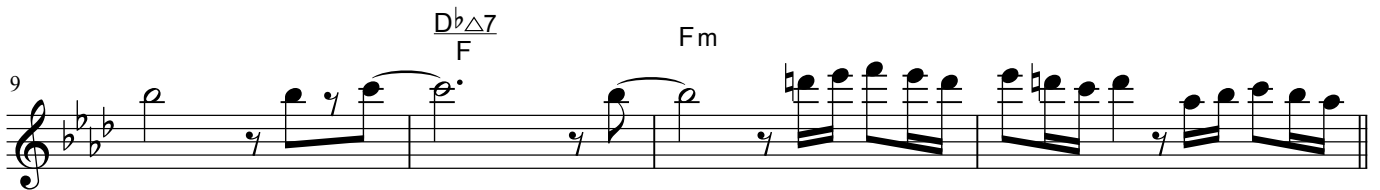
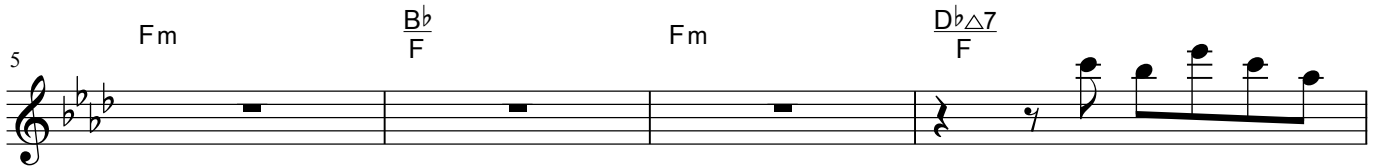
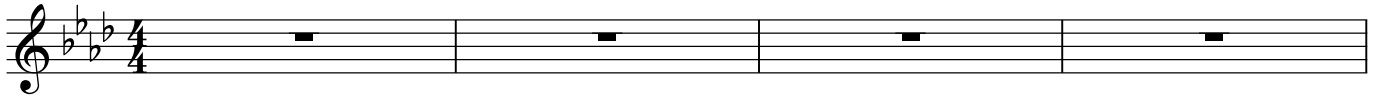
ANOTHE GATE

THE DONFAN

♩ = 80

Intro

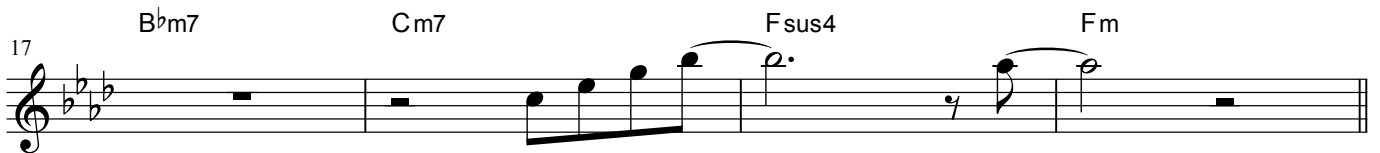
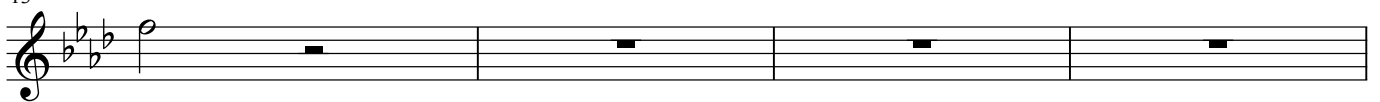
Fm



A

Fm

D \flat Δ 7



B

Fm

D \flat Δ 7



C
37

Chords: $D^{\flat}\Delta 7$, $Cm7$

41

Chords: $D^{\flat}\Delta 7$, $\frac{C}{D}$, $\frac{F}{G}$, $G^{\flat}7$

D
45

Chords: Fm , $D^{\flat}\Delta 7$

49

Chords: $B^{\flat}m7$, $Cm7$, $Fsus4$, Fm

E
53

Chords: $G^{\flat}\Delta 7$, $Fm7$

57

Chords: $E^{\flat}m7$, $Fm7$, $G^{\flat}\Delta 7$, $A^{\flat}7$

61

Chords: $B^{\flat}sus4$, $\frac{B^{\flat}sus4}{A^{\flat}}$, $G^{\flat}\Delta 7$, $G^{\flat}7$ To Coda

F
65

Chords: Fm , $D^{\flat}\Delta 7$

69

Chords: $B^{\flat}m7$, $Cm7$, $Fsus4$, Fm

G open for solo

73 Fm DbΔ7

77 Bbm7 Cm7 Fsus4 Fm

D.S. to **C**

H

81 Fm DbΔ7

85 Bbm7 Cm7 Fsus4 Fm

89 Fm DbΔ7

93 Bbm7 Cm7 Fm

97 Bbm7 Cm7 Fsus4 Fm

101