

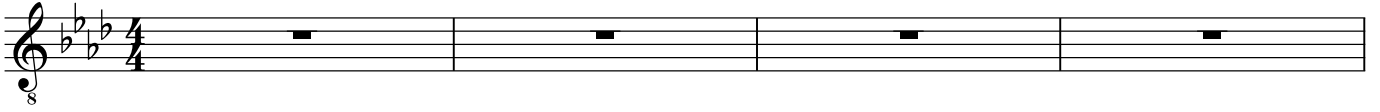
ANOTHE GATE

THE DONFAN

♩ = 80

Intro

Fm

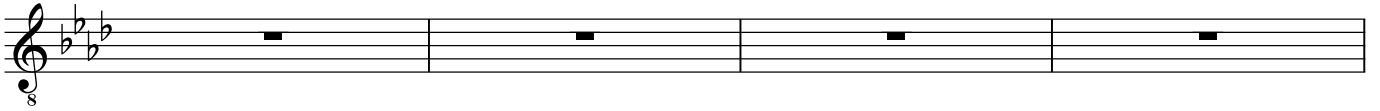


Fm

$\frac{B^b}{F}$

Fm

$\frac{D^b\Delta 7}{F}$



$\frac{D^b\Delta 7}{F}$

Fm



A

Fm

$D^b\Delta 7$



B^bm7

Cm7

Fsus4

Fm



B

Fm

$D^b\Delta 7$



B^bm7

Cm7

Fsus4

Fm



Fm

$D^b\Delta 7$



B^bm7

Cm7

Fsus4

Fm



C
37

DbΔ7 Cm7

41

DbΔ7 C D E/G Gb7

D
45

Fm DbΔ7

49

Bbm7 Cm7 Fsus4 Fm

E
53

GbΔ7 Fm7

57

Ebm7 Fm7 GbΔ7 Ab7

61

Bbsus4 Bbsus4/Ab GbΔ7 Gb7 To Coda

F
65

Fm DbΔ7

69

Bbm7 Cm7 Fsus4 Fm

G open for solo

73 Fm DbΔ7

77 Bbm7 Cm7 Fsus4 Fm

D.S. to **C**

H

81 Fm DbΔ7

85 Bbm7 Cm7 Fsus4 Fm

89 Fm DbΔ7

93 Bbm7 Cm7 Fsus4 Fm

97 Bbm7 Cm7 Fsus4 Fm

101