

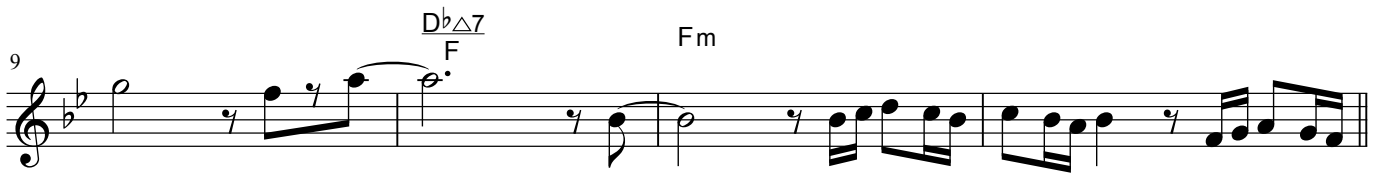
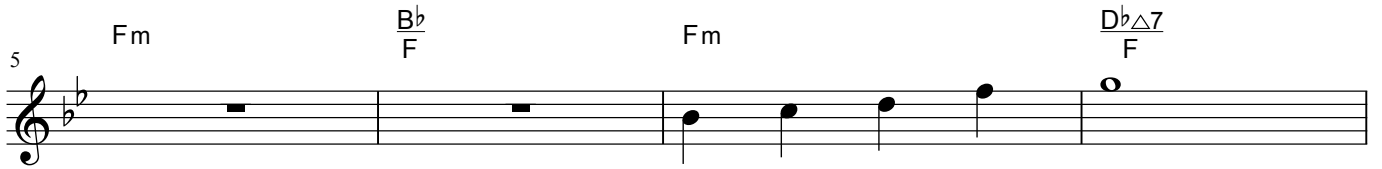
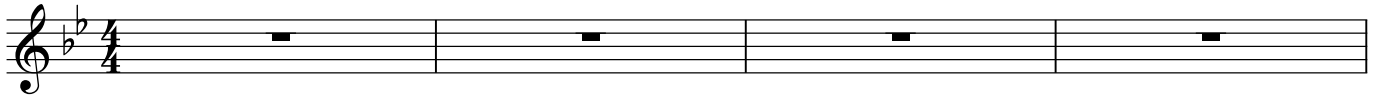
ANOTHE GATE

THE DONFAN

♩ = 80

Intro

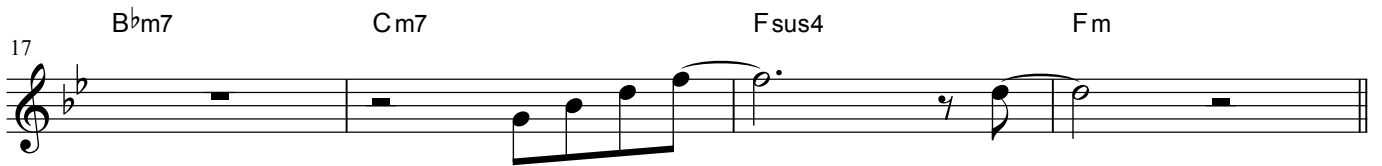
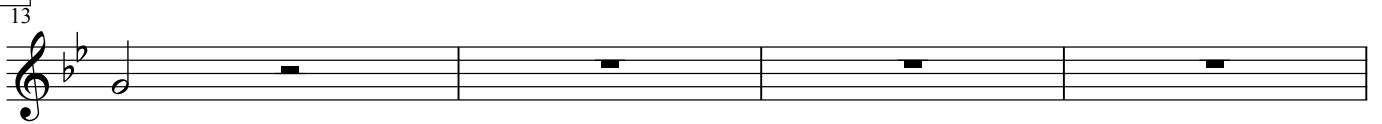
Fm



A

Fm

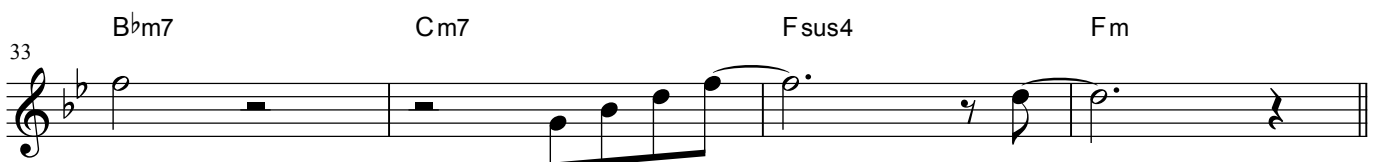
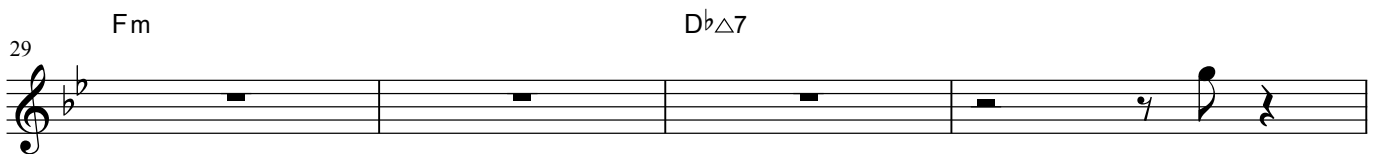
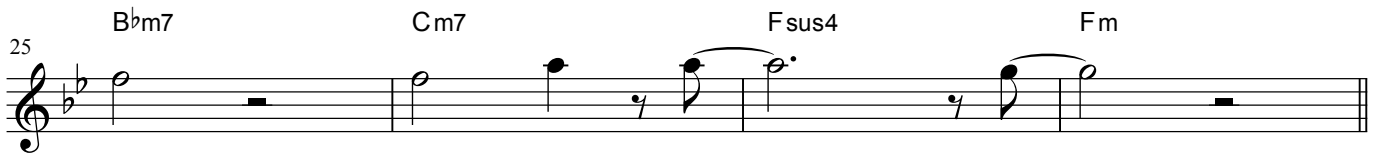
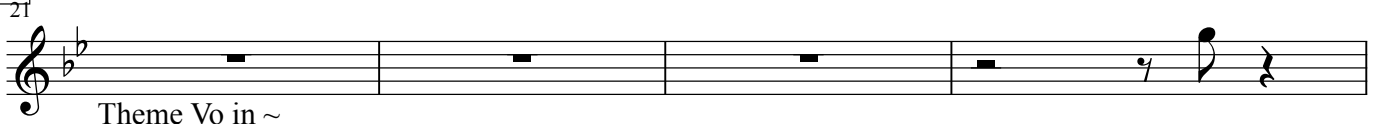
$Db\Delta 7$



B

Fm

$Db\Delta 7$



3rd Tenor Sax 1 ANOTHE GATE

C 37 $\text{Db}\Delta 7$ $\text{Cm}7$

41 $\text{Db}\Delta 7$ C D F G $\text{Gb}7$

D 45 Fm $\text{Db}\Delta 7$

49 $\text{Bb}m7$ $\text{Cm}7$ $\text{Fsus}4$ Fm

E 53 $\text{Gb}\Delta 7$ $\text{Fm}7$

57 $\text{Eb}m7$ $\text{Fm}7$ $\text{Gb}\Delta 7$ $\text{Ab}7$

61 $\text{Bbsus}4$ $\text{Bbsus}4$ $\text{Gb}\Delta 7$ $\text{Gb}7$ *To Coda*

F 65 Fm $\text{Db}\Delta 7$

69 $\text{Bb}m7$ $\text{Cm}7$ $\text{Fsus}4$ Fm

G open for solo

73 Fm DbΔ7

77 Bbm7 Cm7 Fsus4 Fm

D.S. to **C**

H

81 Fm DbΔ7

85 Bbm7 Cm7 Fsus4 Fm

89 Fm DbΔ7

93 Bbm7 Cm7 Fsus4 Fm

97 Bbm7 Cm7 Fsus4 Fm

101