

Apache

THE DONFAN

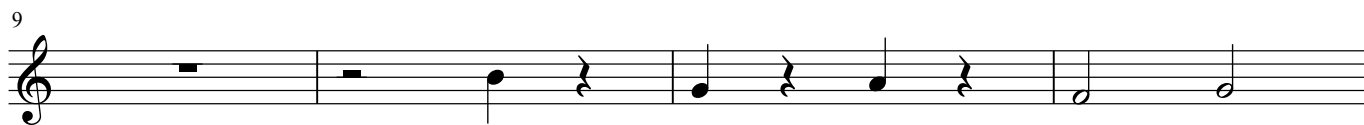
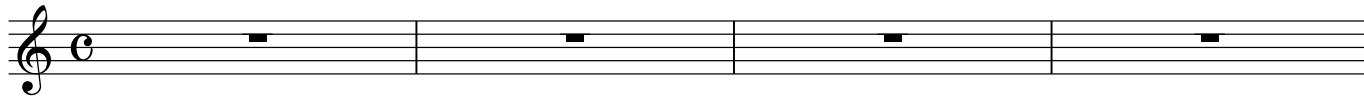
♩ = 270

Intro

slow

F7(#5)

コードは(in B♭)で表記



A 17 open for solo

B♭Δ7

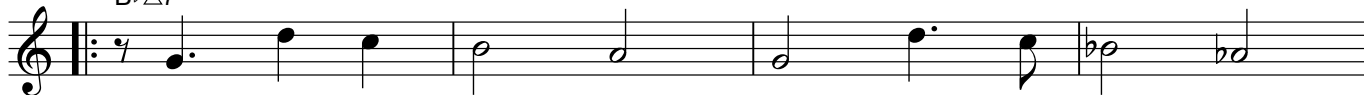
Cm7

F7

Dm7

E♭m7

A♭7



Apache 3rd Tenor Sax 1

45 Cm7 F7 B Δ 7 B $\flat\Delta$ 7

C
49 C \sharp m7 F \sharp 7 B Δ 7

53 Bm7 E7 A Δ 7

57 Dm7 G7 C Δ 7

61 D \flat m7 G \flat 7 Cm7 F7

A'
65 B $\flat\Delta$ 7 Cm7 F7 Dm7 E \flat m7 A \flat 7

69 Dm7 G7 D \flat m7 G \flat 7

73 Cm7 E \flat m7 A \flat 7 Dm7 G7

77 Cm7 B Δ 7 B $\flat\Delta$ 7 C \flat m7/F (Last time G7)

END
81 Cm7 B Δ 7 B \flat M7(\sharp 11)