

# Shining Sun

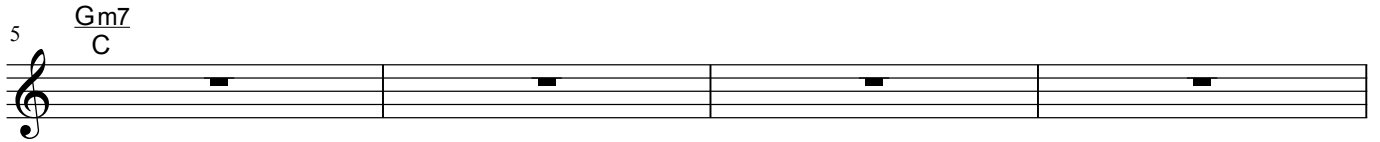
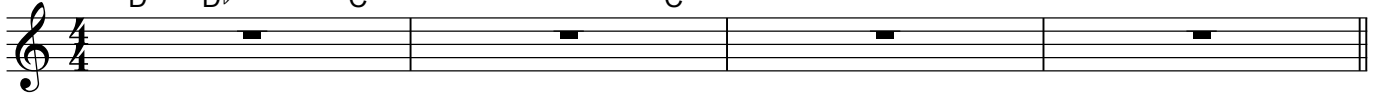
THE DONFAN

16Beat ♩ = 100

Intro

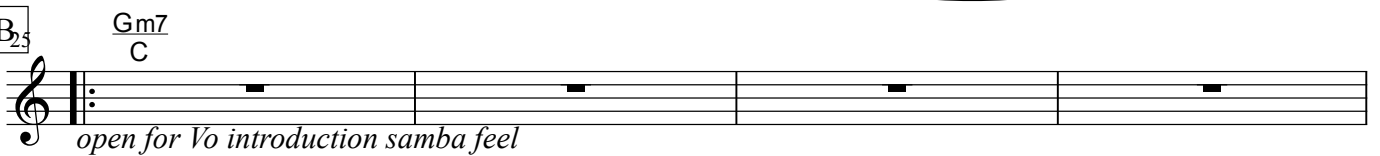
Am7 D    A<sup>b</sup>m9 D<sup>b</sup>    Gm9 C

Gm7 C



A<sub>3</sub>

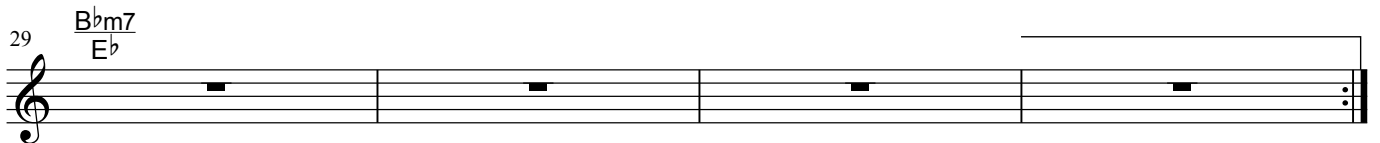
Gm7 C



B<sub>25</sub>

Gm7 C

*open for Vo introduction samba feel*



Am7 D    A<sup>b</sup>m9 D<sup>b</sup>    Gm9 C

Gm7 C

**D**<sub>45</sub>  $\text{Gm7}$   
 $\text{C}$

Theme

49  $\text{Bbm7}$   
 $\text{Eb}$

$\text{Am7}$   $\text{Abm7}$   
 $\text{D}$   $\text{Db}$

**F**<sub>54</sub>  $\text{Ab}$   $\text{GbM7(\#11)}$   $\text{F}\Delta7$   $\text{G}$   $\text{G}\Delta7$   $\text{A}$   $\text{Ab}\Delta7$   $\text{Bb}$

58  $\text{GbM9}$   $\text{Fm9}$   $\text{Fm9}$   $\text{Bb}$   $\text{Gm7}$   $\text{C}$

62  $\text{Db}\Delta7$   $\text{E}\Delta7$   $\text{Gb}$   $\text{Gb13}$   $\text{F}$   $\text{Fm9}$   $\text{Db}\Delta7$

66  $\text{Eb}$   $\text{Fm9}$   $\text{Db}\Delta7$   $\text{Bbm7}$

70  $\text{Csus4}$   $\text{Db}\Delta7$   $\text{Eb}$   $\text{Fsus4}$  *To Coda*

**G**<sub>75</sub> *open for solo*  $\text{Gm7}$   $\text{Bbm7}$   
 $\text{C}$   $\text{Eb}$

D.S. to **D**

**H**<sub>83</sub>  $\text{Db}\Delta7$   $\text{Eb}$   $\text{Fsus4}$

86  $\text{Db}\Delta7$   $\text{Eb}$   $\text{Gb}\Delta7$

90  $\text{Gb}\Delta7$   $\text{F6(9)}$