

On The Sunny Side Of The Street

THE DONFAN

Intro ♩ = 100

5 F7 B \flat 7

9 G7 C7 F C7(#9)

♩ = 260

14 F D7 Gm C7 Am D7 Gm C7 F $\frac{F7}{A}$ B \flat Bdim C Dm Gm C7

Double Time Feel Bass pickup

A 18 F A7 B \flat Em7(b5) A7

22 Dm7 G7 Gm7 C7 Am D7 Gm C7

26 F A7 B \flat Em7(b5) A7 *To Coda*

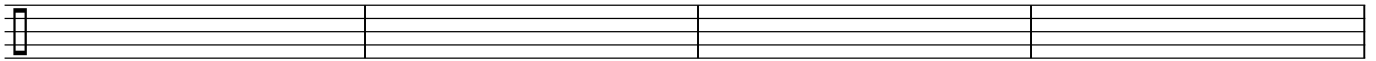
30 Dm7 G7 Gm7 C7 F

B 34 F7 B \flat 7

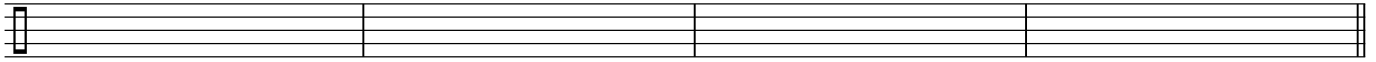
38 G7 Gm7 C7

C

42 F A7 B^b Em7(b5) A7



46 Dm7 G7 Gm7 C7 F



Vamp1

50 F7 B^b7



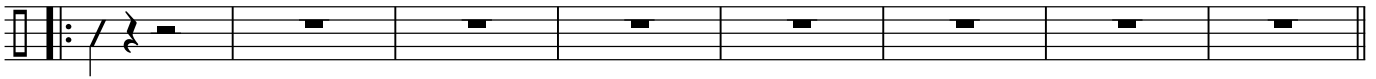
54 G7 C7 F7 B^b7 E^b7 G^b7



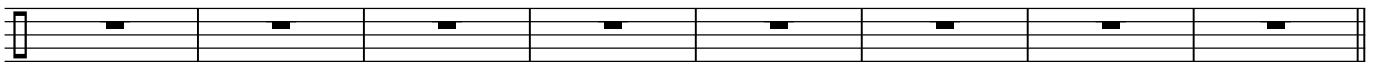
D

open for solo ~

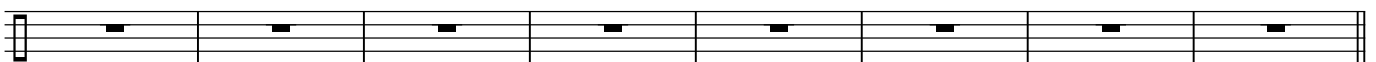
58 F A7 B^b Em7(b5) A7 Dm7 G7 Gm C7 AmD7 Gm C7



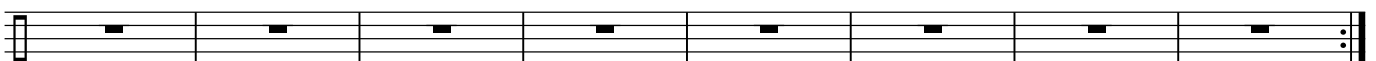
66 F A7 B^b Em7(b5) A7 Dm7 G7 Gm C7 F



74 F7 B^b7 G7 Gm7 C7



82 F A7 B^b Em7(b5) A7 Dm7 G7 Gm C7 F



Vamp2

90 F7 B^b7



94 G7 C7 F7 B^b7 E^b7 G^b7





98 Dm7

G7

Gm7

C7

F

E Half Time Feel

102 F7

106 G7

Gm7

C7

F Double Time Feel

110 F

A7

B \flat

Em7(\flat 5)

A7

114 Dm7

G7

G7

C7

F

H

118 Gm7

B \flat m7

122 Gm7

C7

F

$\frac{F7}{A}$

B \flat

Bdim

126 C7

G \flat 7

F7