

# 野に咲く花の様に

ヴァイオリン

## Intro.

Violin

Bass

E $\flat$  D $\flat$  Cm Cm $\flat$  Am7(b5) B $\flat$ /A $\flat$  E $\flat$ /G G $\flat$ dim Fm7

## A

※ D.S. 後リピートあり

E $\flat$  Cm7 A $\flat$  $\Delta$ 7 B $\flat$ /A $\flat$  Gm7 Cm7

(2回目と4回目～)

A $\flat$  $\Delta$ 7 B $\flat$ /A $\flat$  Gm7 Cm7 1. Fm7 B $\flat$ 7

(1回目 ここから～)

## 2.


Fm7 B $\flat$ 7 E $\flat$  B $\flat$ m7 E $\flat$ 7

## B

A $\flat$  $\Delta$ 7 B $\flat$ /A $\flat$  Gm7 Cm7 Fm7 Dm7(b5) G7 Cm7 B $\flat$ m7 E $\flat$ 7

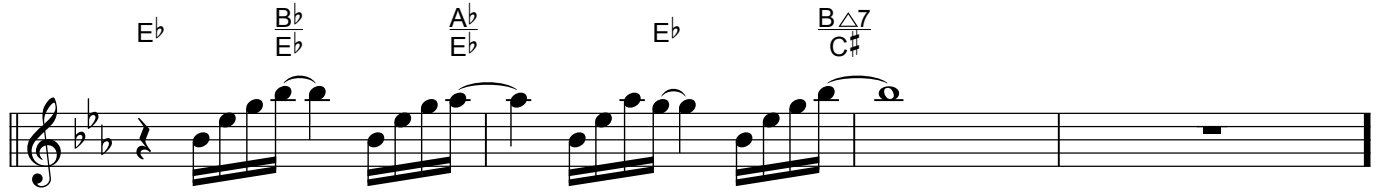
A $\flat$  $\Delta$ 7 B $\flat$ /A $\flat$  Gm7 Cm F7 B $\flat$ 7sus4 B $\flat$ 7

## C

E $\flat$  D $\flat$  Cm9 Cm9 B $\flat$  A $\flat$  $\Delta$ 7 B $\flat$ /A $\flat$  Gm7 Cm7 

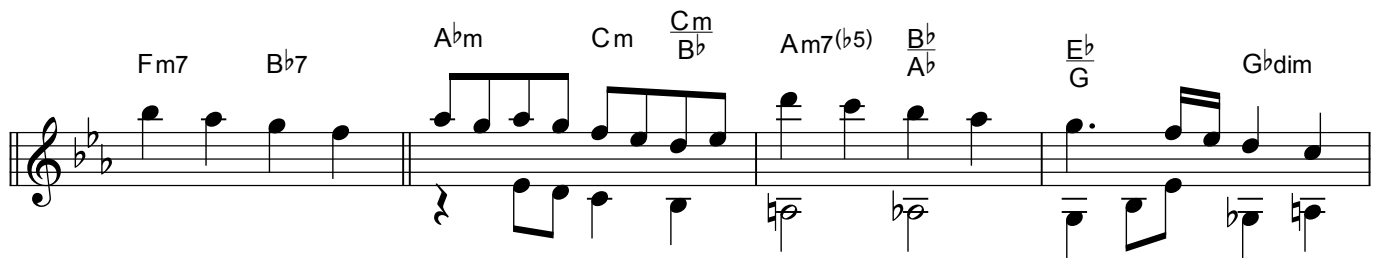
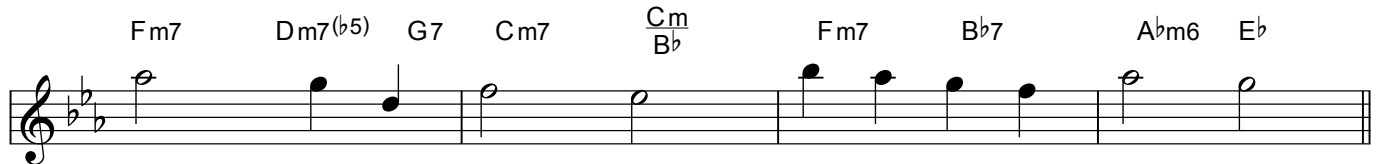
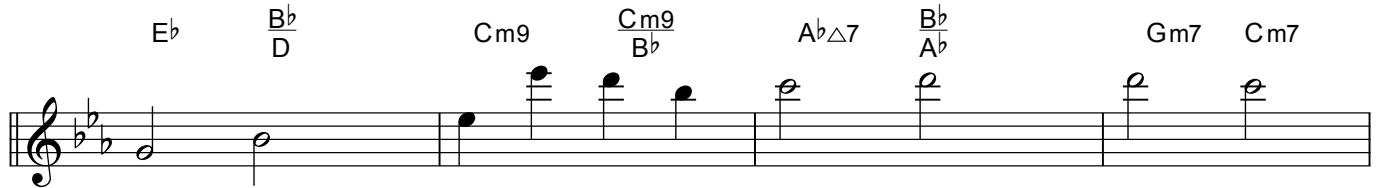
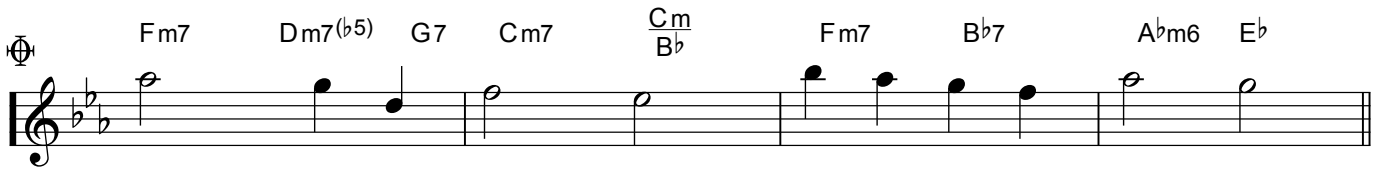
To Coda

Fm7 Dm7(b5) G7 Cm7 Cm B $\flat$  Fm7 B $\flat$ 7 A $\flat$ m6 E $\flat$



D.S.

(～間奏～子どもたちと～)



rit. -----

ララララ ア  
(子ども達) (お母さん達)