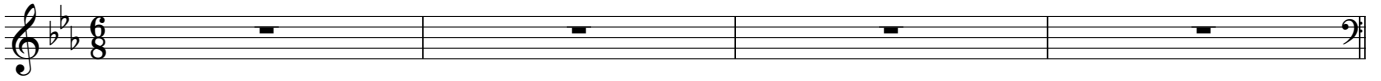


2013.10.7 O.D.M

Intro.

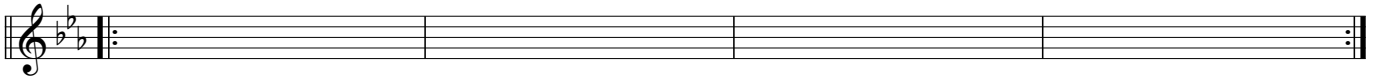
Drums Solo ~



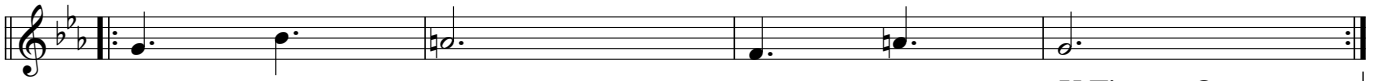
Bass in~ Cm Bb Cm Bb Cm Bb Cm Bb



Piano in~ Cm Bb Cm Bb Cm Bb Cm Bb



Voice in~ Cm Bb Cm Bb Cm Bb Cm Bb



X Times~ Que _____

Foot Prints Cm Bb Cm Bb Cm Bb Cm Bb



Fm Eb Fm Eb Cm Bb Cm Bb



D7 Db7

1. Cm Bb Cm Bb



Bump Cm Bb Cm Bb Cm Bb Cm Bb



2. Cm Bb Cm Bb



Ride Top~

Bump Cm Bb Cm Bb Cm Bb Cm Bb



Drums Fill~

OLD DEVIL MOON

C Bb C Bb



Bass Pattern

C Bb C Cdim Gm7 C7



Drums Fill~

3 3 3

1. Walz~Swing~

F Δ 7 B \flat 13

E \flat m7 A \flat 7 D \flat Δ 7 Dm7 G7 C B \flat 7

C B \flat 7 A Δ 7

Am7 D7 Dm7/G G7

2. Midium 4beat~

F Δ 7 B \flat 13

E \flat m7 A \flat 7 D \flat Δ 7 Dm7 G7 C B \flat 7

C B \flat 7 C B \flat 7

Em7 A7 Dm7 G7 C B \flat 7

Break (Bass only) Only Ride Top & Bass~

To Coda

C B \flat C B \flat

Last time Horn Section in ~ X Times~ Que→Ending

Cm B \flat A \flat A \flat Gm Fm

D \flat Δ 7 B Δ 7

E Δ 7